



CROSS THE LINE

2015



WARRIOR

Customer Service & Order Line
Phone 800-641-0041
Fax 800-836-0775

Rochester Office & Warehouse
Alleson Athletic - Official Licensee of Team Apparel
2921 Brighton-Henrietta Town Line Road
Rochester, NY 14623
Phone 585-272-0606
Fax 585-272-9639

sublimation@alleson.com
www.ALLESON.com



WARRIOR

WARRIORTeamUniforms.com

TEAM UNIFORMS SUBLIMATION TRAINING OUTERWEAR



CROSS THE LINE

CROSS THE LINE

HOME	PERIOD	GUEST
11	1	11
PLYR. PENALTY	SHOTS ON GOAL	SHOTS ON GOAL
1	0	0
1	0	0



NEW!
FOR 2015

WE'VE GOT YOU COVERED!

WARRIOR now offers **COMPLETE UNIFORMS!**

With brand new **PANT SHELLS** that feature a variety of base colors and **SUBLIMATED SIDE INSERTS** and new

FULLY SUBLIMATED SOCKS with a huge selection of designs that you can customize, we are ready to completely outfit your team from head to blade!

NEW! Stock **RINGER!** A midweight jersey with top-shelf mobility.

NEW COLORS! The **SONIC** stock jersey is now available with more color choices.

NEW! Stock **GAME SOCKS!**

NEW! Stock **IGNITION** water repellant jacket.

SUBLIMATED JERSEYS, PANTS & SOCKS

3-4	INTRODUCTION
5-6	LIGHT THE LAMP SERIES JERSEYS
7-12	CHAMPIONS SERIES JERSEYS
13-14	SUBLIMATED INSERT PANT SHELL NEW FOR 2015!
15-16	SUBLIMATED GAME SOCKS NEW FOR 2015!
17	PRINT PATTERN PROGRAM SUBLIMATED JERSEY SUBLIMATED PANT SHELL INSERT NEW FOR 2015! SUBLIMATED GAME SOCKS NEW FOR 2015!
18	PRINT PATTERN DESIGNS
18	SUBLIMATION COLOR COLLECTIONS
19	DECORATION PLACEMENT
19	SUBLIMATED TACKLE TWILL PROGRAM
20	LETTERING AND NUMBERING STYLES
20	LETTERING ARRANGEMENT
21	HOW TO DESIGN AND ORDER SUBLIMATION
22	CARE INSTRUCTIONS
22	ART INFORMATION

STOCK JERSEYS & SOCKS

23	RINGER stock NEW FOR 2015!
24	TURBO stock
25-26	PRO SERIES stock
27	RAZER stock
28	PREDATOR custom
29	CELLY stock
30	SONIC stock NEW COLORS FOR 2015!
31	GAME SOCKS stock NEW FOR 2015!

TRAINING

31	TRAINING SHORTS stock NEW COLORS FOR 2015!
----	---

OUTERWEAR

32	IGNITION NEW FOR 2015!
33	STORM
34	STRATUS
35	MOTION
36	VISION

DECORATION

37-38	DECORATION PROGRAM
-------	--------------------



SIDE 1

SIDE 2

PAGE
21

Hyper FULLY SUBLIMATED REVERSIBLE JERSEYS

Our **EXCLUSIVE** production process creates unique **REVERSIBLE 2-SIDED JERSEYS** with home & away options in a single jersey!

Choose from any designs in the **LIGHT THE LAMP** or **CHAMPIONS SERIES** and decorate with any of the Sublimation Decoration options to create a breathable and durable jersey that is great for games, scrimmages or practice!

Hyper Mesh

The **HYPER MESH** fabric is engineered with top-grade yarn for an **ENHANCED COLOR VIBRANCY** and a **SUPERIOR ABRASION RESISTANCE** to hold up to the challenges of the ice.



HYPER MESH is a medium hole mesh designed for maximum airflow for a comfortably breathable garment.



PAGES
17-18

SUBLIMATED PRINT PATTERN PROGRAM

With **NEW DESIGNS FOR 2015**, you can create your choice of **v-neck** or **lace neck jersey** and pair it with a matching **pant shell** and **game socks**!

NEW! FOR 2015

PAGES
19&37

SUBLIMATED TACKLE TWILL PROGRAM

Add a **PRINT PATTERN DESIGN** to Tackle Twill to create a unique **SUBLIMATED DECORATION** for either **SUBLIMATED** or **NON-SUBLIMATED uniforms!**

NEW FOR 2015! WARRIOR NOW OFFERS COMPLETE UNIFORMS!!

JERSEYS • PANT SHELLS • SOCKS

PAGES
5-12

FULLY SUBLIMATED GAME & PRACTICE JERSEYS

With a massive selection of designs, including an **ALL NEW** line-up of **LIGHT THE LAMP** selections, **WARRIOR SUBLIMATED JERSEYS** have infinitely customizable choices to create your team's uniform exactly how you want it!

- **LIGHT THE LAMP SERIES** - PAGE 5-6
CUTTING EDGE DESIGNS
- **CHAMPIONS SERIES** - PAGES 7-12
CLASSIC TO CONTEMPORARY DESIGNS

NEW DESIGNS FOR 2015! AVAILABLE JULY 2015

PAGES
13-14

NEW! FOR 2015

SUBLIMATED INSERT PANT SHELLS

Continue designing your uniform with our **ALL NEW PANT SHELLS!** Choose your preference of Base Color and Sublimated Insert Design to create a highly durable Pant to match your jersey!

PAGES
15-16

NEW! FOR 2015

FULLY SUBLIMATED GAME SOCKS

Finish your uniform by designing your **ALL NEW FULLY SUBLIMATED GAME SOCKS!** **WARRIOR** offers a wide variety of customizable designs to perfectly complete your team's look!





FULLY SUBLIMATED
GAME & PRACTICE JERSEYS

LIGHT THE LAMP! SERIES

NEW
DESIGNS
FOR 2015!

LIGHT THE LAMP! SERIES

CUTTING EDGE DESIGNS



EQUALIZER KJDH085



CHARGING KJDH084



TUNDRA KJDH086



BREAK KJDH087



CARVE KJDH088



MAPLE KJDH089



SHORTHANDED KJDH090



BENDER KJDH091



LUMBER KJDH092



ENFORCER KJDH093



GRINDER KJDH094



HAT TRICK KJDH095





FULLY SUBLIMATED
GAME & PRACTICE JERSEYS

CHAMPIONS SERIES

A suggested GAME SOCK pairing is shown with each JERSEY DESIGN.
Colors sequences for GAME SOCK designs can be found on page 16.

CHAMPIONS SERIES

DESIGNS RANGING FROM
CLASSIC TO CONTEMPORARY



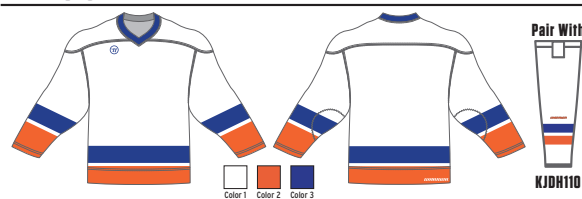
COMPLETE YOUR UNIFORM!

NEW FOR 2015! Sublimated **GAME SOCKS** and Sublimated **GAME PANT SHELLS** are now available to complement your Sublimated Jersey. A suggested GAME SOCK pairing is shown with each JERSEY DESIGN. Colors sequences for GAME SOCK designs can be found on page 16.

SUBLIMATED PANT SHELLS - pages 13 - 14

SUBLIMATED GAME SOCKS - pages 15 - 16

KJDH029



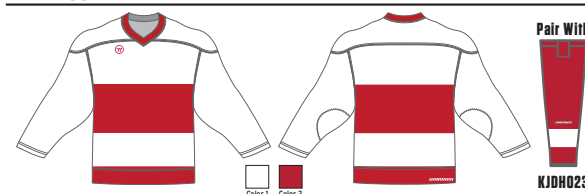
KJDH098



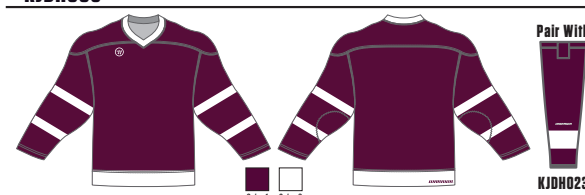
CHAMPIONS SERIES

A suggested GAME SOCK pairing is shown with each JERSEY DESIGN.
Colors sequences for GAME SOCK designs can be found on page 16.

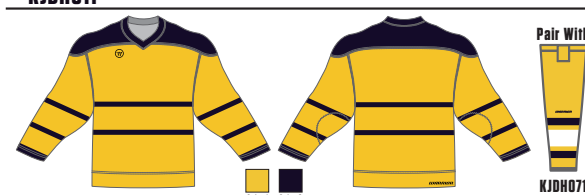
KJDH002



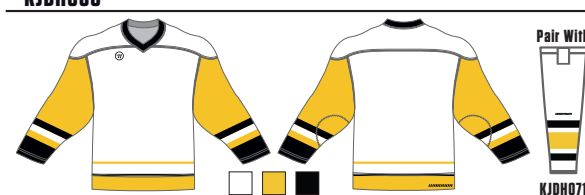
KJDH009



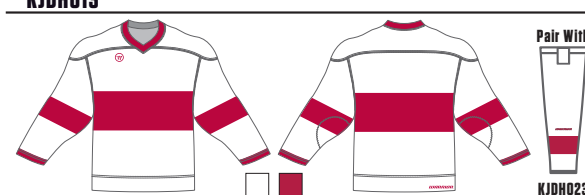
KJDH011



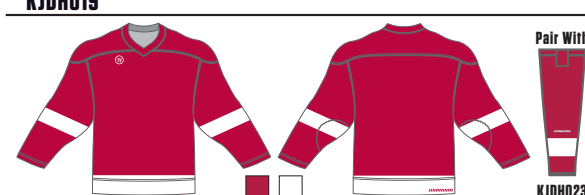
KJDH060



KJDH013



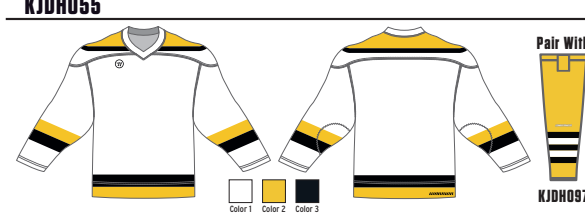
KJDH019



KJDH008



KJDH055



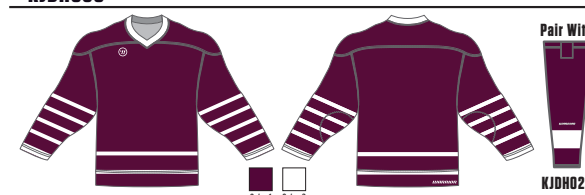
FULLY SUBLIMATED
GAME & PRACTICE JERSEYS



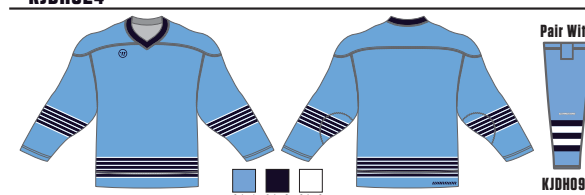
KJDH099



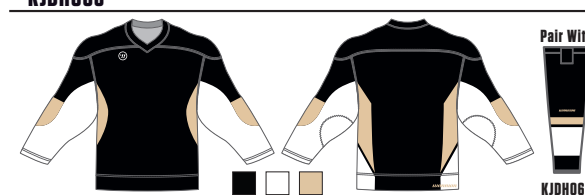
KJDH050



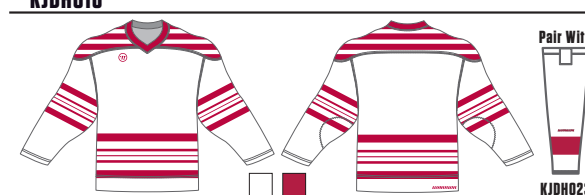
KJDH024



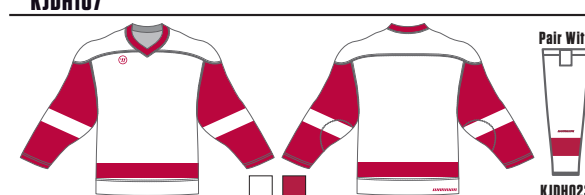
KJDH065



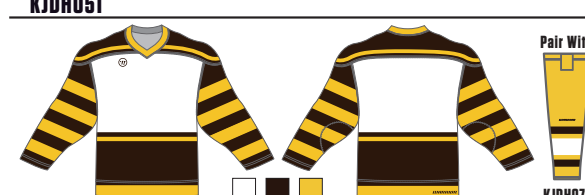
KJDH016



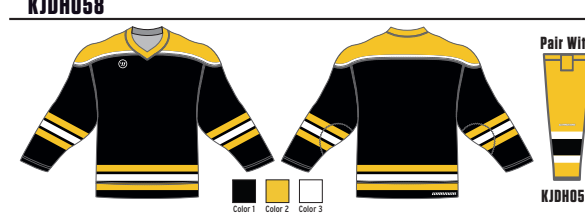
KJDH107



KJDH051



KJDH058





FULLY SUBLIMATED GAME & PRACTICE JERSEYS

KJDH004



KJDH015



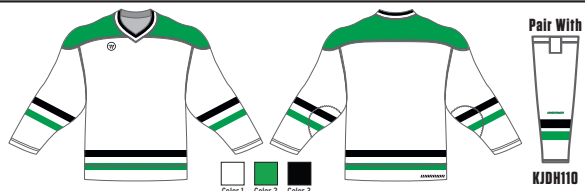
KJDH061



KJDH010



KJDH102



KJDH021



KJDH108



KJDH053



CHAMPIONS SERIES

A suggested GAME SOCK pairing is shown with each JERSEY DESIGN.
Colors sequences for GAME SOCK designs can be found on page 16.

KJDH006



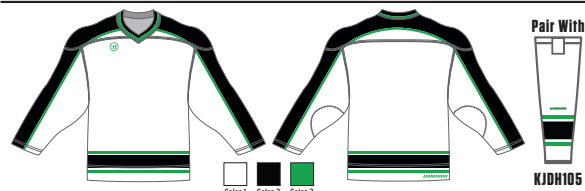
KJDH056



KJDH014



KJDH063



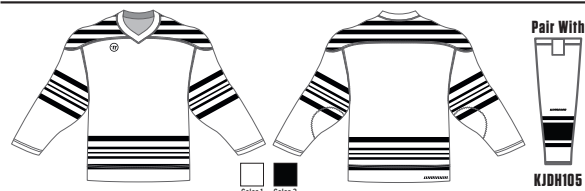
KJDH022



KJDH048



KJDH012



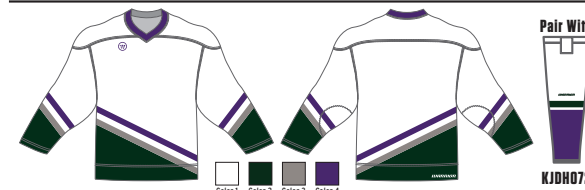
KJDH097



CHAMPIONS SERIES

A suggested GAME SOCK pairing is shown with each JERSEY DESIGN.
Colors sequences for GAME SOCK designs can be found on page 16.

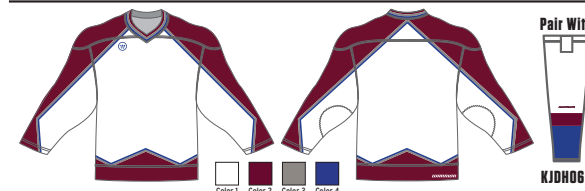
KJDH040



KJDH064



KJDH042



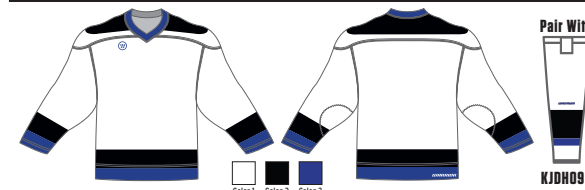
KJDH037



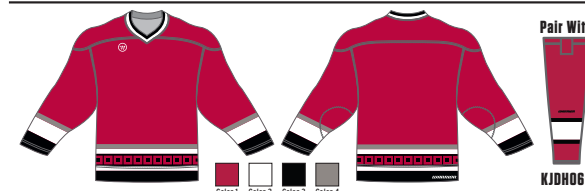
KJDH036



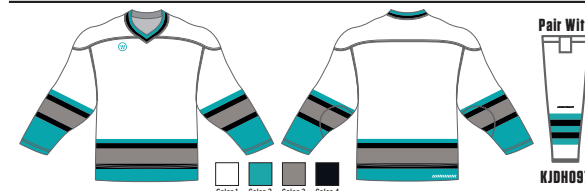
KJDH039



KJDH044



KJDH038



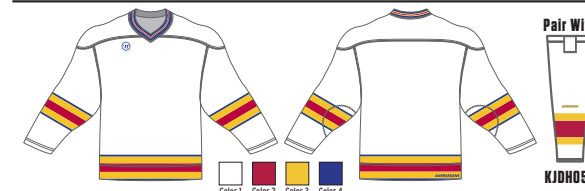
FULLY SUBLIMATED GAME & PRACTICE JERSEYS



KJDH103



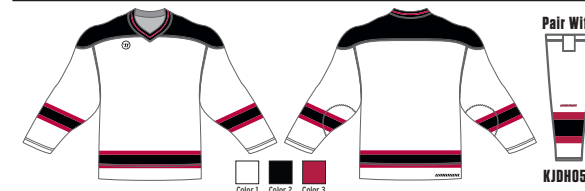
KJDH032



KJDH068



KJDH062



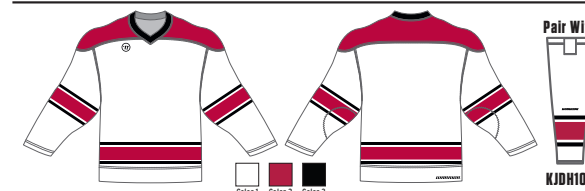
KJDH096



KJDH076



KJDH105



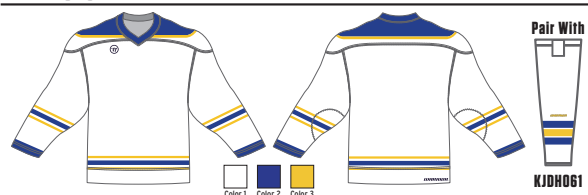
KJDH109



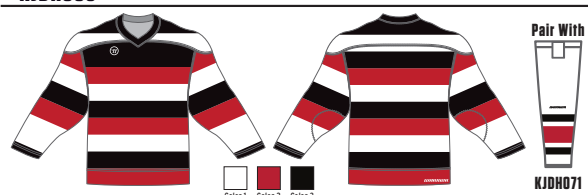


FULLY SUBLIMATED GAME & PRACTICE JERSEYS

KJDH026



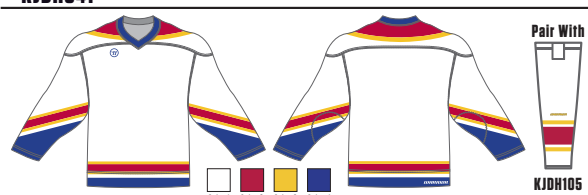
KJDH003



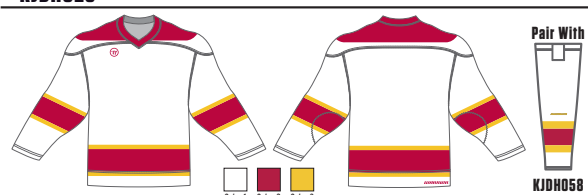
KJDH017



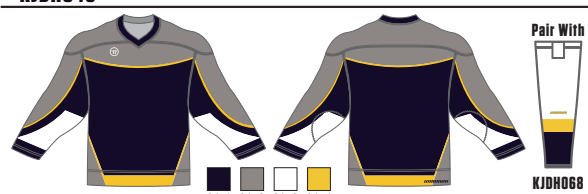
KJDH041



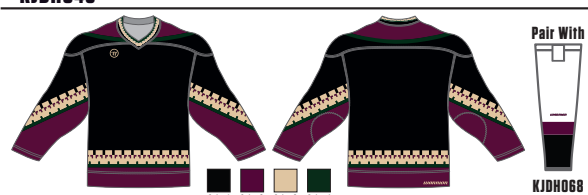
KJDH028



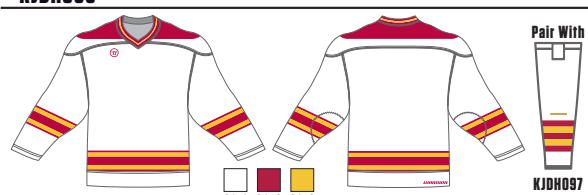
KJDH045



KJDH043



KJDH059



CHAMPIONS SERIES

A suggested GAME SOCK pairing is shown with each JERSEY DESIGN.
Colors sequences for GAME SOCK designs can be found on page 16.

KJDH104



KJDH073



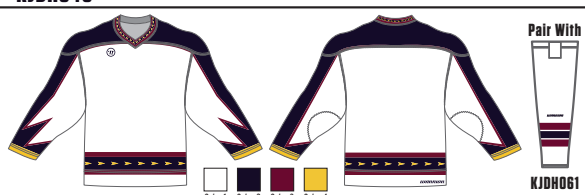
KJDH023



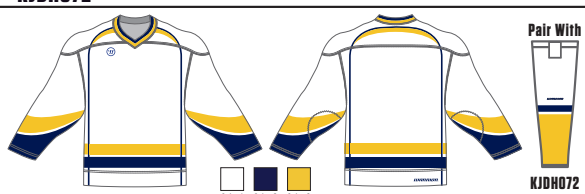
KJDH071



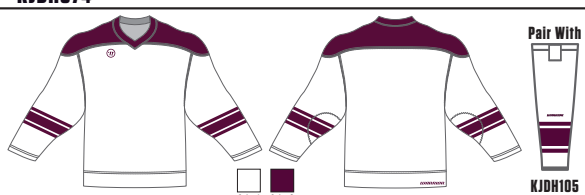
KJDH046



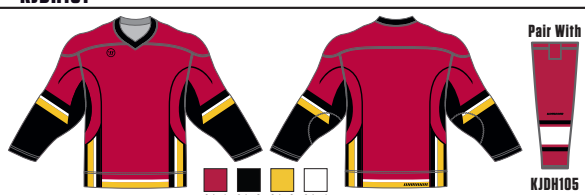
KJDH072



KJDH074



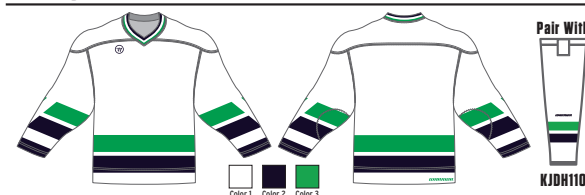
KJDH101



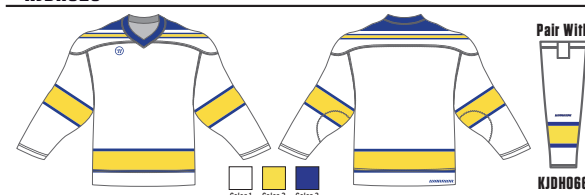
CHAMPIONS SERIES

A suggested GAME SOCK pairing is shown with each JERSEY DESIGN.
Colors sequences for GAME SOCK designs can be found on page 16.

KJDH027



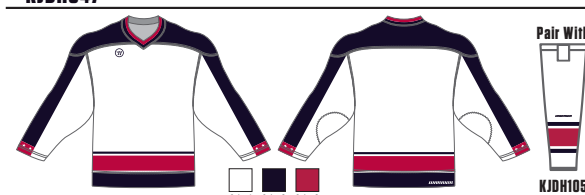
KJDH025



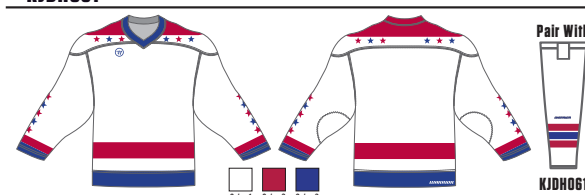
KJDH020



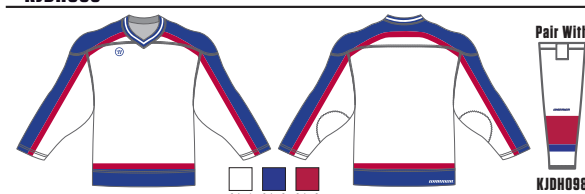
KJDH047



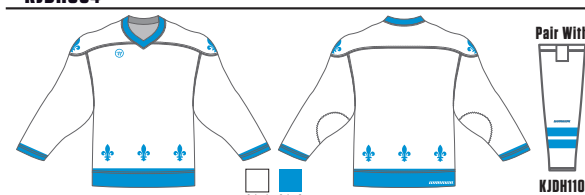
KJDH031



KJDH035



KJDH034



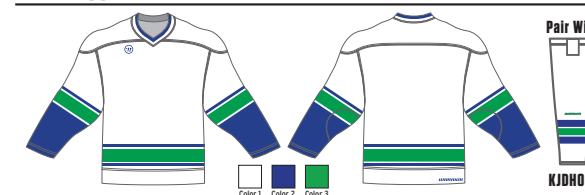
KJDH007



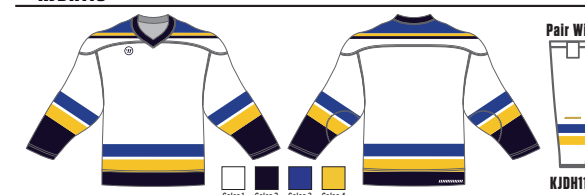
FULLY SUBLIMATED GAME & PRACTICE JERSEYS



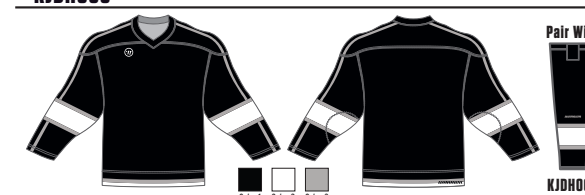
KJDH100



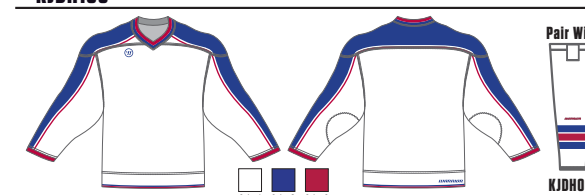
KJDH110



KJDH066



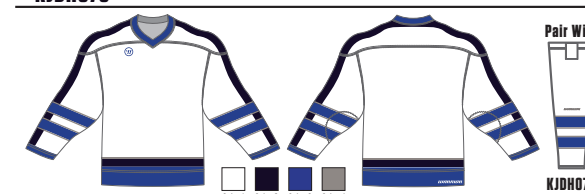
KJDH106



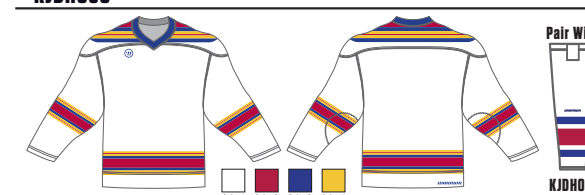
KJDH077



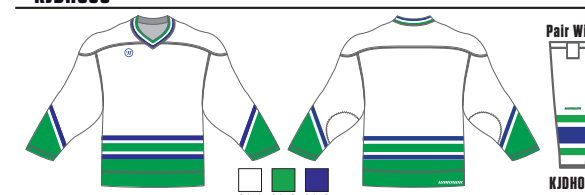
KJDH078



KJDH030



KJDH033





SUBLIMATED INSERT GAME PANT SHELL

NEW!
FOR 2015



KJDH096 shown with NAVY base color
and optional INSERT DECORATION



GAME PANT SHELL WITH SUBLIMATED INSERTS - ADULT KJPT01

DESCRIPTION

- Lightweight shell that covers hockey pants
- Stretch ribbed fabric panels at front and back and in inner thighs for full range of motion
- Tunneled lock belt system, with 3/4" webbing belt (black only)
- Sublimated 4" side insert panels for full customization
- Cover hemmed leg openings
- Embroidered Warrior "Circle W" logo on left leg

FABRIC CONTENT

BODY/INSERTS: 100% nylon (200 denier)
RIBBING: 100% stretch polyester

COLORS OFFERED

BODY & RIBBING: BLACK or NAVY
SIDE INSERTS: Refer to the SUBLIMATED COLOR COLLECTIONS chart on page 18 for available color choices

SIZING & PRICES

KJPT01A	ADULT	XS-XL	\$80.00	XXL	\$84.00
KJPT01G	GOALIE	M-XL	\$88.00		
KJPT01Y	YOUTH	XS-XL	\$76.00		

CUSTOM DESIGN A PRINT PATTERN INSERT
FOR YOUR PANT SHELL

For more information, PRINT PATTERN DESIGNS and
SUBLIMATION COLORS, refer to pages 17-18.



HOW TO design your GAME PANT SHELL

1 CHOOSE BODY COLOR

Choose Your BODY COLOR. Choose from BLACK or NAVY.



BLACK



NAVY

2 CHOOSE INSERT DESIGN & COLORS

Choose Your SIDE INSERT DESIGN and select the COLORS for the design.

KJDH023



COLOR 1

KJDH073



COLOR 1
COLOR 2

KJDH097



COLOR 1
COLOR 2

KJDH096



COLOR 1
COLOR 2

KJDH074



COLOR 1
COLOR 2

KJDH099



COLOR 1
COLOR 2
COLOR 3

KJDH061



COLOR 1
COLOR 2
COLOR 3

KJDH101



COLOR 1
COLOR 2
COLOR 3

KJDH104



COLOR 1
COLOR 2

KJDH076



COLOR 1
COLOR 2

KJDH065



COLOR 1
COLOR 2
COLOR 3

KJDH077



COLOR 1
COLOR 2
COLOR 3

3 OPTION: CHOOSE INSERT DECORATION

Add a TEAM NAME (or Team Nickname, Mascot Name, etc.) down the side insert. Choose from the LETTERING choices on page 20 or supply your own font.



SUBLIMATED INSERT GAME PANT SHELL



FULLY SUBLIMATED GAME SOCKS

NEW!
FOR 2015

GAME SOCKS ADULT, INTERMEDIATE & YOUTH GAME SOCKS KJSOC6A / KJSOCYA, KJSOC6B / KJSOCY6, KJSOC67 / KJSOCY7, KJSOC69 / KJSOCY9

DESCRIPTION

- Elasticized ankle to secure shinguard
- Velcro fasteners on inside of sock to attach to pant
- Insert at back for comfortable fit
- Warrior wordmark above stripes or at mid-shin (solids)
- Adult: 29" Length x 7" Width
- Intermediate: 25" Length x 6" Width
- Youth: 21" Length x 5.5" Width

LENGTH measured from TOP OF SOCK to BOTTOM OPENING
WIDTH measured across BOTTOM OPENING

FABRIC CONTENT

KJSOC6A/KJSOC6B/KJSOCYA: 100% polyester mock mesh with moisture management fibers
KJSOC6A6/KJSOC6B6/KJSOCY6: 100% polyester double knit with 4-way stretch (15 oz.)
KJSOC6A7/KJSOC6B7/KJSOCY7: 100% polyester pebble cloth (6.2 oz.)
KJSOC6A9/KJSOC6B9/KJSOCY9: 100% polyester stretch warp knit pin dot mesh

COLORS OFFERED

Refer to the SUBLIMATED COLOR COLLECTIONS chart on page 18 for available color choices

SIZING & PRICES

KJSOC6A	ADULT	\$50.00
KJSOC6B	INTERMEDIATE	\$49.00
KJSOCYA	YOUTH	\$48.00
KJSOC6A6	ADULT	\$50.00
KJSOC6B6	INTERMEDIATE	\$49.00
KJSOCY6	YOUTH	\$48.00
KJSOC6A7	ADULT	\$50.00
KJSOC6B7	INTERMEDIATE	\$49.00
KJSOCY7	YOUTH	\$48.00
KJSOC6A9	ADULT	\$50.00
KJSOC6B9	INTERMEDIATE	\$49.00
KJSOCY9	YOUTH	\$48.00

Last letter/number in STYLE CODE indicates fabric content (eg. - "A", "6", "7", "9")

ADD A SUBLIMATED DECORATION TO YOUR SOCK DESIGN!

Finish your design with an optional logo, mascot or other decoration to your Sublimated Sock. For more information on Decoration Placement, see page 19.

NEW!
FOR 2015



KJDH002



COLOR 1

KJDH023



COLOR 1 COLOR 2

KJDH056



COLOR 1 COLOR 2

KJDH058



COLOR 1 COLOR 2
COLOR 3

KJDH061



COLOR 1 COLOR 2
COLOR 3

KJDH065



COLOR 1 COLOR 2
COLOR 3

KJDH066



COLOR 1 COLOR 2
COLOR 3

KJDH068



COLOR 1 COLOR 2
COLOR 3

KJDH071



COLOR 1 COLOR 2
COLOR 3

KJDH072



COLOR 1 COLOR 2
COLOR 3

KJDH078



COLOR 1 COLOR 2
COLOR 3

KJDH097



COLOR 1 COLOR 2
COLOR 3

KJDH098



COLOR 1 COLOR 2
COLOR 3

KJDH103



COLOR 1 COLOR 2
COLOR 3 COLOR 4

KJDH104



COLOR 1 COLOR 2
COLOR 3

KJDH105



COLOR 1 COLOR 2
COLOR 3

KJDH110



COLOR 1 COLOR 2
COLOR 3

NEW!
FOR 2015

ADD A CUSTOM PRINT PATTERN TO YOUR GAME SOCK

For more information,
PRINT PATTERN DESIGNS
and SUBLIMATION COLORS,
refer to pages 17-18.





FULLY SUBLIMATED PRINT PATTERN PROGRAM

SUBLIMATED JERSEYS

Choose from the **Pattern Designs** on the following page and **3 print locations** - **ALL-OVER**, **BACK ONLY** or **INSERTS** - to create your custom jersey.

PATTERN LOCATION	LOCATION CODE	PATTERN LOCATION	LOCATION CODE	PATTERN LOCATION	LOCATION CODE
ALL-OVER	KJDA01	BACK ONLY	KJDB01	INSERTS	KJDS01
FRONT		FRONT		FRONT	
BACK		BACK		BACK	
Color Sequence		Color Sequence		Color Sequence	
CHOOSE PATTERN		CHOOSE PATTERN		CHOOSE PATTERN	
Color 1		Color 1	Color 2	Color 1	Color 2

AVAILABLE STYLES

V-NECK JERSEYS	LACE NECK JERSEYS
KJ120A/KJ120Y Set-in sleeve jerseys with mitered v-neck	KJ126A/KJ126Y Set-in sleeve jerseys with lace neck
KJ12AA/KJ12AY Set-in sleeve jerseys with mitered v-neck and texturized tricot mesh side and underarm inserts for ventilation	KJ128A/KJ128Y Set-in sleeve jerseys with lace neck and texturized tricot mesh side and underarm inserts for ventilation

Pricing and Fabrics can be found in the **SUBLIMATED UNIFORMS** section.
For features, information and pricing, refer to page 21.

SUBLIMATED PANT SHELLS

Match your jersey with a custom designed **PANT SHELL** with a **Print Pattern Insert**!



Choose from the patterns on the following page and see pages 13-14 for more information and pricing for the new **SUBLIMATED PANT SHELL**.

SUBLIMATED GAME SOCKS



Complete your uniform with a custom designed **Print Pattern GAME SOCK**!

Choose from the patterns on the following page and see pages 15-16 for more information and pricing for the new **SUBLIMATED GAME SOCK**.



**CUSTOM DESIGN YOUR UNIFORM WITH
PRINT PATTERN JERSEYS,
PANT SHELLS and GAME SOCKS!**

CHOOSE FROM THE PATTERNS ON THE FOLLOWING PAGE AND
SEE PAGES 13-16 FOR MORE INFORMATION AND PRICING.

**NEW
DESIGNS
FOR 2015!**

PRINT PATTERN & SUBLIMATED TACKLE TWILL PATTERN DESIGNS

Choose your **PATTERN DESIGN**, for the **PRINT PATTERN** (for Jerseys and Pant Shell inserts) and **TACKLE TWILL PROGRAMS**, and begin to create your original uniform!

NEW PATTERN DESIGNS!

	PUSH	SHARK	CADDY2	DUBS	WOODLAND	FUTURE GLORY	EMPOWERED	CATHEDRAL	FIBER		
PP code	JIDPUSH	JIDSHRK	JIDCDY2	JIDDUBS	JIDWLD	JIDGLRY	JIDEMPD	JIDCHDL	JIDFBR		
TT code	JTTPUSH	JTTSHRK	JTTCDY2	JTTDUBS	JTTWLD	JTTGLRY	JTTEMPD	JTTCHDL	JTTFBR		
	COLOR 1	COLOR 1 COLOR 2	COLOR 1 COLOR 2 COLOR 3 COLOR 4	COLOR 1 COLOR 2 COLOR 3	COLOR 1 COLOR 2 COLOR 3 COLOR 4	COLOR 1 COLOR 2 COLOR 3	COLOR 1	COLOR 1	COLOR 1		
	SPEED	STACKED	IGNITE	TERRAPIN	CIRCUIT	RASTER	TILE WAVE	FLANNEL	SOLID	STING	BLITZ
PP code	JIDSPD	JIDSTK	JIDIGNT	JIDTRPN	JIDCRT	JIDRSTR	JIDTLW	JIDFLNL	JIDSOL	JIDSTNG	JIDBLTZ
TT code	JTTSPPD	JTTSTK	JTTIGNT	JTTTRPN	JTTCRT	JTTRSTR	JTTTLW	JTTFLNL	JTTSOL	JTTSTNG	JTTBLTZ
	COLOR 1	COLOR 1	COLOR 1	COLOR 1	COLOR 1	COLOR 1	COLOR 1		COLOR 1	COLOR 1	COLOR 1
	DIGI CAMO	HIGH TEC	RIP TIDE	ZEBRA	REDZONE	PAWS	TIGER	DIAMOND PLATE	GRID IRON	CARBON	LINKED
PP code	JIDDIGI	JIDHTEC	JIDRPTD	JIDZEBR	JIDRDZN	JIDPAWS	JIDTIG	JIDPLT	JIDGIRN	JIDCBN	JIDLKD
TT code	JTTDIGI	JTTHTEC	JTTRPTD	JTTZEBR	JTTRDZN	JTTPAWS	JTTTIG	JTTPLT	JTTGIRN	JTTCBN	JTTLKD
	COLOR 1 COLOR 2 COLOR 3	COLOR 1 COLOR 2	COLOR 1	COLOR 1 COLOR 2	COLOR 1 COLOR 2	COLOR 1 COLOR 2	COLOR 1 COLOR 2	COLOR 1 COLOR 2	COLOR 1 COLOR 2	COLOR 1 COLOR 2	COLOR 1 COLOR 2

PP code - Use when specifying **PATTERN PRINT** designs.
TT code - Use when specifying **TACKLE TWILL** designs.

The following patterns use different **TONES** of one chosen color to achieve the pattern effect:
RASTER, **CARBON**, **CIRCUIT**, **TILE WAVE**, **RIPTIDE**, **CATHEDRAL**, **SPEED**, **FIBER**

WARRIOR SUBLIMATION Color Collections!

Providing the ultimate selection of rich, vibrant colors for teams, leagues, and All-Stars!
Mix & Match our collections to create your own winning combinations!

To avoid confusion, ALWAYS SPECIFY THE COLOR SEQUENCES IN ORDER. WARRIOR can not guarantee a perfect match between sublimated colors and stock fabric colors.

ATHLETIC											
ARENA ORANGE AG	BLACK BK	CARDINAL CA	CHARCOAL CH	COLUMBIA BLUE CB	DARK GREEN DG	GREEN BAY GOLD GB	GREY GR	KELLY GREEN KE	LIGHT GOLD LG	MAROON MA	NAVY BLUE NA
OLD GOLD OG	ORANGE OR	PINK PI	PURPLE PU	ROYAL BLUE RO	SCARLET SC	SILVER SI	TEAL TE	TENNESSEE ORANGE TN	TEXAS ORANGE TO	VEGAS GOLD VG	WHITE WH

BATTLEFIELD											
USMC RED UR	USMC GOLD UO	USAF ROYAL UY	USAF GREY UG	USN NAVY UN	US ARMY GOLD UB	US ARMY GOLD AO	RIFLE GREEN FG	BAGBY GREEN BY	COMBAT GREY CG	DESERT SAND DS	COYOTE BROWN YB
MILITARY OLIVE MO	INFANTRY BLUE IB										

EARTH									
BRASS GOLD RG	BROWN BR	CONCRETE JUNGLE CJ	MOSS GREEN ME	NUDE NU	OLIVE GREEN OL	SEA GREEN SE	STORM BLUE SB	VINTAGE WHITE VW	WINE RED WR

ELECTRIC AQUA EA	ELECTRIC BLUE EB	ELECTRIC BUBBLEGUM EU	ELECTRIC CHERRY EC	ELECTRIC GREEN EG	ELECTRIC MAROON EM	ELECTRIC ORANGE EO	ELECTRIC PINK EP	ELECTRIC PURPLE ER	ELECTRIC WATERMELON EW	ELECTRIC YELLOW EY
------------------------	------------------------	-----------------------------	--------------------------	-------------------------	--------------------------	--------------------------	------------------------	--------------------------	------------------------------	--------------------------

CREAMSICLE CM	LAVENDER LA	LIGHT PINK LP	MIAMI TEAL MT	OCEAN CURRENT OC	POWDER BLUE PB	RASPBERRY RED RR	SEA FOAM GREEN SF	SHADOW SH	SOUR MELON SU	STRAWBERRY RED SR	TURBO YELLOW TY
------------------	----------------	------------------	------------------	------------------------	-------------------	------------------------	-------------------------	--------------	------------------	-------------------------	-----------------------



SUBLIMATION DECORATION PLACEMENT

TOPS

1. Upper Front (Standard Team Name Location)
2. Center Front (Standard Number Location)
3. Lower Front
4. Upper Right Chest
5. Upper Left Chest
6. Right Chest
7. Left Chest
8. Placket (Where Applicable)
10. Bottom Right
11. Bottom Left
- *12. Mid Right Sleeve
- *13. Mid Left Sleeve
- *14. Right Elbow Sleeve
- *15. Left Elbow Sleeve
- *16. Lower Right Sleeve
- *17. Lower Left Sleeve
20. Right Collar - WS
21. Left Collar - WS
22. Back Collar Inside - WS
23. Back Collar Outside - WS
24. Upper Back (Standard Player Name Location)
25. Center Back (Standard Number Location)
26. Lower Back
27. Back Tail
28. Bottom Right Back
29. Bottom Left Back
37. Below Collar / Neck (Back)

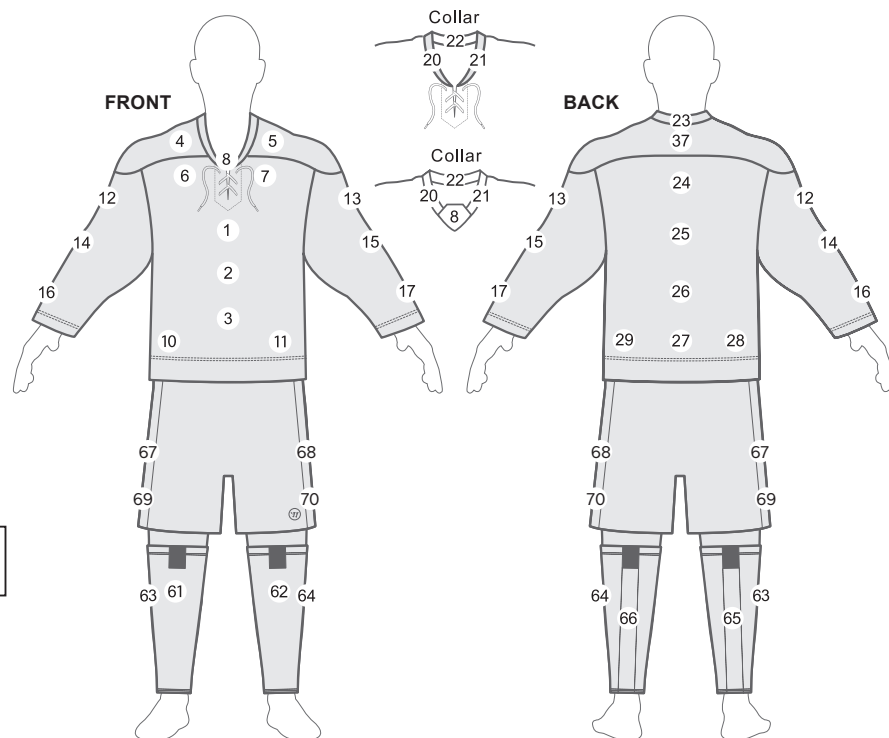
PANT SHELLS

67. Mid Right Side - WS
68. Mid Left Side - WS
69. Lower Right Side - WS
70. Lower Left Side - WS

SOCKS

61. Upper Right Knee - WS
62. Upper Left Knee - WS
63. Upper Right Side - WS
64. Upper Left Side - WS
65. Back Calf Right Insert - WS
66. Back Calf Left Insert - WS

* These locations are also offered Front (A) and Inner (B).
WS WARRIOR SUBLIMATION Only
Right or Left refers to the garment as you are wearing it.



GAME UNIFORM PLACEMENTS

See all of our WARRIOR SUBLIMATION colors, including our newest collections on page 18.



SUBLIMATION LETTERING & NUMBERING STYLES

Want a different Lettering or Numbering Style? Let us know what you would like!

The lettering and number styles shown below are our suggested styles. Other options are shown throughout this catalog and are available at no additional charge. Lettering and number styles are shown in one color, but are available in multiple color designs.

ADD CITY BOY

0123456789
ABCDEFGHIJKLMNO
PQRSTUVWXYZ

AIR MILLHOUSE

0123456789
ABCDEFGHIJKLMN
OPQRSTUVWXYZ

APACHE

0123456789
ABCDEFGHIJKLMNO
PQRSTUVWXYZ

COLLEGIATE

0123456789
ABCDEFGHIJKLMN
OPQRSTUVWXYZ

DOUBLE OUTLINE

0123456789
ABCDEFGHIJKLMN
OPQRSTUVWXYZ

ELITE

0123456789
ABCDEFGHIJKLMNO
PQRSTUVWXYZ

EVOLUTION

0123456789
ABCDEFGHIJKLMNO
PQRSTUVWXYZ

FALCON

0123456789
ABCDEFGHIJKLMN
OPQRSTUVWXYZ

FULL BLOCK

0123456789
ABCDEFGHIJKLMNO
PQRSTUVWXYZ

GEARED

0123456789
ABCDEFGHIJKLMNO
PQRSTUVWXYZ

HOMESTEAD

0123456789
ABCDEFGHIJKLMNO
PQRSTUVWXYZ

INTERVAL

0123456789
ABCDEFGHIJKLMNO
PQRSTUVWXYZ

MACHINE

0123456789
ABCDEFGHIJKLMNO
PQRSTUVWXYZ

PLAYMAKER

0123456789
ABCDEFGHIJKLMNO
PQRSTUVWXYZ

TIFFANY

0123456789
ABCDEFGHIJKLMNO
PQRSTUVWXYZ

UNIVERSITY

0123456789
ABCDEFGHIJKLMN
OPQRSTUVWXYZ

WARRIOR 1

0123456789
ABCDEFGHIJKLMNO
PQRSTUVWXYZ

WARRIOR 2

0123456789
ABCDEFGHIJKLMNO
PQRSTUVWXYZ

ATHLETIC SCRIPT

ABCDEFGHIJKLMN
OPQRSTUVWXYZ

BALL PARK

ABCDEFGHIJKLMN
OPQRSTUVWXYZ

BRUSH SCRIPT

ABCDEFGHIJKLMN
OPQRSTUVWXYZ

CLASSIC SCRIPT

ABCDEFGHIJKLMN
OPQRSTUVWXYZ

HOME TOWN

ABCDEFGHIJKLMN
OPQRSTUVWXYZ

OLDE ENGLISH

ABCDEFGHIJKLMN
OPQRSTUVWXYZ

UNICORN

ABCDEFGHIJKLMN
OPQRSTUVWXYZ



SUBLIMATED TACKLE TWILL PROGRAM

Exciting enhancements to any stock uniform over traditional decoration!
Sublimated Tackle Twill is offered in one or two colors and with satin stitch only on one color twill. See page 37 for pricing.

1 CHOOSE: LETTERING AND NUMBERING FONT, SIZE AND ARRANGEMENT

See page 38 for Tackle Twill Lettering and Number Options.

2 CHOOSE: SUBLIMATED TWILL DESIGN AND COLOR 1 (BASE LAYER/FILL)

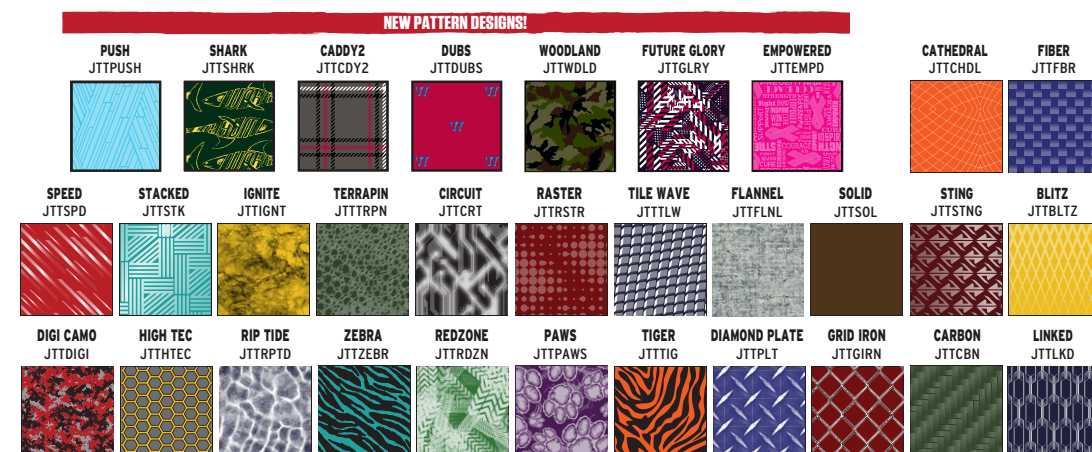
Offered in solid colors or Pattern Designs. WARRIOR SUBLIMATION COLORS are shown on page 18. Satin stitch is also available in one color twill, in standard twill colors only. See page 37 for available colors.

3 CHOOSE: COLOR 2 (TOP LAYER/OUTLINE) (OPTIONAL)

The second color of twill will be standard Tackle Twill, not sublimated. Therefore, only standard twill colors are available, see page 37.

DESIGN PATTERNS

Patterns shown below are available on WARRIOR SUBLIMATED TACKLE TWILL. See decoration details on page 18.



SUBLIMATION LETTERING ARRANGEMENTS

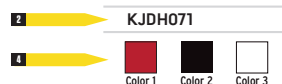




SUBLIMATED JERSEYS HOW TO ORDER

GAME JERSEY EXAMPLE

This example is design number KJDH071.
It is an ON ICE SERIES design.



1 CHOOSE STYLE

Choose Your STYLE. Select from the 5 JERSEY STYLES below. The HYPER Jersey is only available in the HYPER Reversible v-neck.

For SIZE REFERENCE compare to PRO SERIES - KH130 Stock Jerseys



KJ120A/KJ120Y

Set-in sleeve jerseys with mitered v-neck



KJ12AA/KJ12AY

Set-in sleeve jerseys with mitered v-neck and textured tricot mesh side and underarm inserts for ventilation



KJ126A/KJ126Y

Set-in sleeve jerseys with lace neck



KJ128A/KJ128Y

Set-in sleeve jerseys with lace neck and textured tricot mesh side and underarm inserts for ventilation

V-NECK STYLE PRICING

V-NECK	ADULT / YOUTH	GOALIE
KJ120A - Adult	S-XL \$100.00	XXL \$104.00
KJ120Y - Youth	S-L \$96.00	
KJ12AA - Adult	S-XL \$104.00	XXL \$108.00
KJ12AY - Youth	S-L \$100.00	XXXL \$112.00

LACE NECK STYLE PRICING

LACE NECK	ADULT / YOUTH	GOALIE
KJ126A - Adult	S-XL \$110.00	XXL \$114.00
KJ126Y - Youth	S-L \$106.00	
KJ128A - Adult	S-XL \$114.00	XXL \$118.00
KJ128Y - Youth	S-L \$110.00	XXXL \$122.00



Hyper JERSEY STYLE

KJHRJAX/KJHRJYX

HYPER Reversible Jersey -
2 printed sides with
set-in sleeves and mitered v-neck

Hyper styles are only available in Hyper Fabric X which is already indicated in the style code - for example: KJHRJAX. There is no need to add a "X" to the style code when ordering Hyper styles.

Hyper STYLE PRICING

HYPER	ADULT / YOUTH	GOALIE
KJHRJAX - Adult	S-XL \$180.00	XXL \$190.00
KJHRJYX - Youth	S-L \$170.00	XXXL \$200.00

2 CHOOSE DESIGN

Choose your Design from the LIGHT THE LAMP or CHAMPION SERIES design choices on pages 5-12.

Identify your choice by the DESIGN NUMBER - see the example below.

3 CHOOSE FABRIC

Select from the fabric options below:

- A: 100% polyester mock mesh with moisture management fibers
- 7: 100% polyester pebble cloth
- 6: 100% polyester 15 oz. double knit with 4-way stretch
- 9: 100% polyester stretch warp knit pin dot mesh

The HYPER Jersey is only available in HYPER MESH:

X: HYPER MESH - 100% polyester medium hole mesh

4 CHOOSE DESIGN COLORS

Choose Your Design Colors — Indicate colors in specified color sequence (see the Game Jersey example above).

Refer to SUBLIMATION COLOR COLLECTIONS on page 18 to choose colors.

5 CHOOSE DECORATION PLACEMENTS

Add as many Decoration Placements as you would like.

See page 19 for DECORATION PLACEMENT OPTIONS.

6 CHOOSE DECORATION CONTENT FOR EACH PLACEMENT

Choose the Lettering and Number Options, Letter Arrangement, Stock Art/Logos, Colors and Sizing for each Print Placement.

See page 20 for LETTERING & NUMBER OPTIONS and LETTERING ARRANGMENT OPTIONS.

See page 22 for information on STOCK ART.

Refer to the SUBLIMATION COLOR COLLECTIONS on page 18 for Color Options.

9 easy steps to design and order your Sublimated Jersey

To enhance the appearance and extend the life of your Sublimated uniforms, Alleson Athletic recommends that you follow these cleaning and storing procedures:

DO NOT DRY CLEAN

DO NOT WASH IN HOT WATER

DO NOT USE CHLORINE BLEACH

DO NOT USE FABRIC SOFTENER

DO NOT WASH WHITES AND COLORS TOGETHER

- Uniforms should always be laundered immediately after wearing. However, if this is not possible, rinse garments and hang individually on rust-proof hangers. (Moisture may cause color migration of acid dyes so we advise separating wet or damp uniforms.)
- Belts and any other contrasting color items should be washed separately from the garment.
- It is always advisable to test wash a single uniform according to directions before washing an entire load.
- We recommend presoaking heavily soiled garments in cold water with a protein release agent. Follow the instructions recommended by the presoak manufacturer. Wash garments immediately following the presoak in a normal wash cycle.
- Wash and rinse all garments in cold water with mild detergent. Remove promptly after wash cycle to avoid color migration. Wash inside out.
- For optimum results, hang garments (especially those with spandex) to dry. If you cannot hang dry, machine dry on the lowest setting. Turn jerseys inside out before machine drying. Remove items from dryer immediately upon completion of the cycle. (Excessive heat can cause fabric shrinkage and discoloration.)
- Make sure uniforms are completely dry before storing. Store in a dry area to prevent mildew. Protect them from sunlight and fluorescent light to prevent yellowing.

PLEASE NOTE: Alleson Athletic will not be responsible for uniforms that are damaged due to improper care and maintenance. Failure to follow our specified care instructions will void all guarantees.

**Under no circumstances are sublimated garments to be put through a screen print dryer.
Dyes will migrate and the design will be ruined.**

SUBLIMATION CARE INSTRUCTIONS



SUBLIMATION ART INFORMATION



ILLUSTRATIONS SHOWN THROUGHOUT THIS CATALOG ARE REPRESENTATIONS OF SUBLIMATED UNIFORMS. ACTUAL DESIGNS MAY VARY SLIGHTLY.

STOCK ART

All graphic designs shown on garments throughout this catalog are available. If you have a specific layout or concept in mind other than what is shown, please be sure to describe it in detail on the order form.

A vast library of art, such as mascots, sport logos, etc., are also available upon request.

CUSTOM ART

No art charge for stock designs or numbers. Extra art charges may apply for custom design artwork. Complex logos and artwork will incur an additional art charge at the rate of \$120.00 per hour. A high-resolution digital vector file must be provided for artwork; any other format may incur an additional art charge. Please contact Alleson Athletic Customer Service at 1-800-641-0041 for specifics on art requirements.

We reserve the right to adjust the size of layout/letters to fit the garment in the most attractive way possible. In certain situations, a similar lettering style to the one requested may have to be substituted to accommodate layout.

All orders must be emailed or faxed to an Alleson Athletic Customer Service Representative, Attn: Sublimation.

Fax number is 1-800-836-0775. Email orders to: sublimation@alleson.com

COLOR MATCHING

Scientifically, it is not possible to achieve a perfect color match from one sublimated garment to another, or from sublimated garments to Alleson stock garments. Therefore, we cannot guarantee a perfect match from order to order or from one fabric to another.

ARTWORK APPROVAL POLICY

Alleson Athletic will not begin production on any order until a written artwork approval is received or submitted through the Alleson Athletic Uniform Builder or B2B (Green Order). Signed artwork approvals must be faxed or emailed to Alleson Athletic Customer Service, Attn: SUBLIMATION.

Production will begin upon receipt of approved artwork (this policy is also in effect for repeat or As Had orders). We cannot accept changes to any order after artwork approval is received.

Fax: 1-800-836-0775 Email: SUBLIMATION@alleson.com



ADULT & YOUTH STOCK JERSEY RINGER

NEW!
FOR 2015



RINGER ADULT & YOUTH JERSEY KH560A / KH560G / KH560Y

DESCRIPTION

- Two color jersey with contrast color yoke and bottom stripes
- Contrast color double knit single ply yoke with 1" stripe
- Bottom jersey stripe has 3" top stripe and 1" bottom stripe
- Self-material set-in v-neck with neck placket
- Main body color in polyester mesh to provide breathability and full range of motion
- Shirt tail bottom for appearance and better fit
- Hemmed bottom and sleeve ends
- Embroidered Warrior "Circle W" logo on right chest (as worn)

FABRIC CONTENT

100% Cationic colorfast polyester pebble mesh with moisture management fibers
100% Cationic colorfast polyester double knit shoulder and stripes

SIZING & PRICES

KH560A	ADULT	S-XXL	\$50.00
KH560G	GOALIE	XXXL	\$56.00
KH560Y	YOUTH (dual sizes)	S/M, L/XL	\$48.00



BLACK/WHITE



DK. GREEN/WHITE



MAROON/WHITE



NAVY/WHITE



ROYAL/WHITE



SCARLET/WHITE



WHITE/BLACK



WHITE/NAVY



WHITE/ROYAL



WHITE/SCARLET



TURBO ADULT & YOUTH STOCK JERSEY KH559 / KH559G / KH559Y

DESCRIPTION

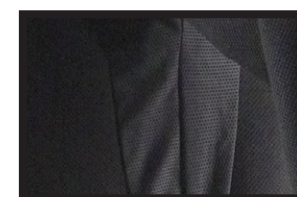
- Two color jersey with contrast color 1 3/4" horizontal stripes across upper and lower body (front & back) along with two stripes on the sleeves
- "V" shaped lace neck with self-material placket behind contrast color laces with a self-material contrast color collar that tapers to a point before it meets the laces
- Main body color lycra stretch mesh gussets to provide breathability and full range of motion
- Shirt tail bottom with side slits for appearance and better fit
- Single ply yoke
- Hemmed bottom and sleeve ends
- Warrior logo embroidered on right shoulder (as worn)
- Available in stock colors only

FABRIC CONTENT

100% Cationic polyester mock mesh body with moisture management
100% polyester double knit stripes and neck
88% polyester / 12% spandex mesh gussets

SIZING & PRICES

KH559	ADULT	S-XXL	\$54.00
KH559G	GOALIE	XXXL	\$62.00
KH559Y	YOUTH (dual sizes)	S/M, L/XL	\$52.00



STRETCH MESH GUSSETS



SHIRT TAIL BOTTOM HEM



LACE NECK



BLACK/WHITE



DK. GREEN/WHITE



MAROON/WHITE



NAVY/WHITE



PURPLE/WHITE



ROYAL/WHITE



SCARLET/WHITE



BLACK/SCARLET



SCARLET/ROYAL



NAVY/SCARLET



WHITE/BLACK



WHITE/NAVY



WHITE/ROYAL



WHITE/SCARLET



ADULT & YOUTH STOCK JERSEY PRO SERIES

CLOSEOUT
AVAILABLE WHILE
INVENTORY LASTS

PRO-LEVEL JERSEYS
with rugged construction,
HOME/AWAY options
and a full range of
color options!



PRO SERIES ADULT & YOUTH STOCK JERSEY KH130 / KH130G / KH130Y

DESCRIPTION

- Multi-color Air Mesh jersey with individual team designs per colorway - each color has completely unique design
- Self-material, set-in v-neck that comes to a point in center with neck placket
- Double ply yoke
- Hemmed bottom and sleeve ends
- Embroidered Warrior "W" logo on right chest as worn and "WARRIOR" wordmark on tail

FABRIC CONTENT

100% polyester Air Mesh with moisture management

COLORS OFFERED

BLACK / LIGHT GOLD / WHITE	WHITE / BLACK / LIGHT GOLD
DARK GREEN / KHAKI / SCARLET	WHITE / DARK GREEN / SCARLET
ORANGE / WHITE / BLACK	WHITE / ORANGE / BLACK
PURPLE / WHITE / BLACK	WHITE / BLACK / PURPLE
ROYAL / SCARLET / WHITE	WHITE / ROYAL / SCARLET
ROYAL / WHITE / ROYAL	WHITE / ROYAL / WHITE
SCARLET / ROYAL / WHITE	WHITE / SCARLET / ROYAL
SCARLET / WHITE / BLACK	WHITE / BLACK / SCARLET
SCARLET / WHITE / SCARLET	WHITE / SCARLET / WHITE
TEAL / BLACK / WHITE	WHITE / TEAL / BLACK

SIZING & PRICES

KH130	ADULT	S-XXL	\$30.00
KH130G	GOALIE	XXXL	\$36.00
KH130Y	YOUTH (dual sizes)	S/M, L/XL	\$28.00



ADULT & YOUTH STOCK JERSEY PRO SERIES



BLACK / LIGHT GOLD / WHITE



WHITE / BLACK / LIGHT GOLD



DARK GREEN / KHAKI / SCARLET



WHITE / DARK GREEN / SCARLET



ORANGE / WHITE / BLACK



WHITE / ORANGE / BLACK



PURPLE / WHITE / BLACK



WHITE / BLACK / PURPLE



ROYAL / SCARLET / WHITE



WHITE / ROYAL / SCARLET



ROYAL / WHITE / ROYAL



WHITE / ROYAL / WHITE



SCARLET / ROYAL / WHITE



WHITE / SCARLET / ROYAL



SCARLET / WHITE / BLACK



WHITE / BLACK / SCARLET



SCARLET / WHITE / SCARLET



WHITE / SCARLET / WHITE



TEAL / BLACK / WHITE



WHITE / TEAL / BLACK



ADULT & YOUTH STOCK JERSEY RAZER



AVAILABLE IN HOME AND AWAY VERSIONS,
THIS MIDWEIGHT JERSEY
COMBINES CLASSIC STYLING WITH
DURABILITY AND BREATHABILITY.



MESH UNDERARM GUSSETS



RAZER ADULT & YOUTH STOCK JERSEY KH350 / KH350G / KH350Y

DESCRIPTION

- Two color jersey with self-material, contrast color piping down sleeves, under arms, and across bottom hem – self-material contrast color upper sleeve and bottom inserts on white jersey
- Ribbed, set-in v-neck that comes to a point in center and neck placket
- Mesh underarm gussets for breathability and performance
- Single ply yoke
- Hemmed bottom and sleeve ends
- Embroidered Warrior logo

FABRIC CONTENT

100% four-way stretch polyester double knit
100% polyester mesh inserts Air Mesh with moisture management

SIZING & PRICES

KH350	ADULT	S-XXL	\$46.00
KH350G	GOALIE	XXXL	\$54.00
KH350Y	YOUTH (dual sizes)	S/M, L/XL	\$44.00



BLACK/WHITE



DK. GREEN/WHITE



MAROON/WHITE



NAVY/WHITE



PURPLE/WHITE



ROYAL/WHITE



SCARLET/WHITE



WHITE/BLACK



WHITE/DK. GREEN



WHITE/MAROON



WHITE/NAVY



WHITE/PURPLE



WHITE/ROYAL



WHITE/SCARLET



ADULT & YOUTH CUSTOM JERSEY PREDATOR



PREDATOR ADULT & YOUTH CUSTOM JERSEY

KHQ500 / KHQ500G / KHQ500Y - Polyester pebble cloth with poly lycra mesh inserts
KHQ504 / KHQ504G / KHQ504Y - Polyester double knit with poly lycra mesh inserts

DESCRIPTION

- Multiple color, tight fit, full stretch game jersey
- Full length stretch side panels - curved on sleeve straight down sides of jersey
- Two piece yoke with stretch fabric insert around neck for added performance and style
- Hemmed bottom and sleeve ends
- Sewn-in elbow pads
- Comfort "Y" neck - three piece, self-material neck tipped and with front piping
- Entire jersey is cover seamed for appearance and reinforcement
- Embroidered Warrior logo on lower back and front chest

FABRIC CONTENT

KHQ500 / KHQ500G / KHQ500Y: 100% polyester pebble cloth
KHQ504 / KHQ504G / KHQ504Y: 100% polyester heavyweight double knit (15 oz./sq. yd.)
INSERTS: 85% polyester / 15% lycra mesh

COLORS OFFERED

KHQ500 - 100% polyester pebble cloth

BLACK DK GREEN MAROON NAVY ORANGE PURPLE ROYAL SCARLET WHITE

KHQ504 - 100% polyester heavyweight double knit

BLACK CARDINAL COL BLUE DK GREEN KELLY LIGHT GOLD MAROON NAVY ORANGE PINK PURPLE ROYAL
SCARLET SILVER TEAL VEGAS GOLD WHITE

INSERT COLORS - 85% nylon / 15% lycra mesh inserts

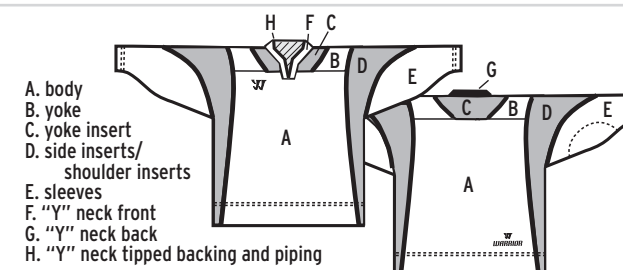
BLACK DK GREEN KELLY LIGHT GOLD MAROON NAVY ORANGE PURPLE ROYAL SCARLET SILVER WHITE

SIZING & PRICES

KHQ500	ADULT	S-XXL	\$88.00
KHQ500G	GOALIE	S-XXL	\$94.00
KHQ500Y	YOUTH (dual sizes)	S/M, L/XL	\$82.00
KHQ504	ADULT	S-XXL	\$84.00
KHQ504G	GOALIE	S-XXL	\$90.00
KHQ504Y	YOUTH (dual sizes)	S/M, L/XL	\$78.00

There will be a 50% up-charge for orders less than six pieces per style, per color for custom jerseys.
Allow five weeks from the day of receipt by Warrior Team Uniforms for shipment of custom jerseys.

COLOR ORDER



OPTIONS

a) Change color of garment:

Color A - body
Color B - yoke
Color C - yoke insert (close to neck)
Color D - side/shoulder inserts
Color E - sleeves
Color F - "Y" neck front
Color G - "Y" neck back
Color H - "Y" neck tipped backing and piping

b) Change the style of neck:

Option 1 - regular mitered v-neck
Option 2 - lace neck
Option 3 - placket neck (KH300)
Color 1 - rib neck
Color 2 - placket

c) Add fighting strap

d) Add piping to inserts:

Option 1 - add piping to inside of side inserts
Option 2 - add piping to outside of side inserts
Option 3 - add piping to front and back of yoke
Option 4 - add piping around yoke insert

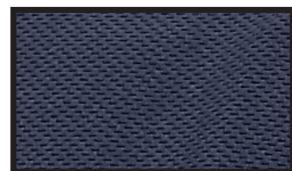
KHQNVN N/C
KHQNLG \$16.00
KHQNPB \$4.00

KHQFS \$12.00

KHQ5PSI \$6.00
KHQ5PIP \$6.00
KHQ5PIY \$4.00
KHQ5PNO \$6.00



ADULT & YOUTH STOCK JERSEY CELLY



AIR MESH FABRIC FOR
COMFORTABLE BREATHABILITY



CELLY ADULT & YOUTH STOCK JERSEY KH120 / KH120G / KH120Y

DESCRIPTION

- Two color jersey with contrast color, self-material inserts and piping
- Contrast color, self-material inserts on inner sleeves starting at underarms and pointing down towards sleeve ends
- Contrast color, self-material side inserts starting at underarms and coming to a point toward bottom of jersey
- Contrast color, self-material piping on both front and back of yoke
- Single ply yoke
- Self-material, set-in v-neck that comes to a point in center and contrasting color neck placket
- Hemmed bottom and sleeve ends
- Embroidered Warrior "W" logo on right chest as worn and wordmark on tail

FABRIC CONTENT

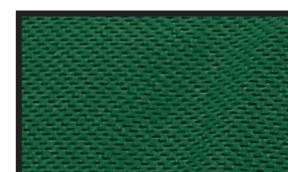
100% polyester Air Mesh with moisture management

SIZING & PRICES

KH120	ADULT	S-XXL	\$27.00
KH120G	GOALIE	XXXL	\$31.00
KH120Y	YOUTH (dual sizes)	S/M, L/XL	\$25.00



NEW
COLORS
FOR 2015!
AVAILABLE JULY 2015



AIR MESH FABRIC FOR
COMFORTABLE BREATHABILITY



SONIC ADULT & YOUTH STOCK JERSEY KH109 / KH109G / KH109Y

DESCRIPTION

- Solid color body
- Single ply yoke
- Hemmed bottom and sleeve ends
- Self-material, set-in lap-over v-neck
- Warrior logo embroidered on shoulder and wordmark on tail
- Available in stock colors only

FABRIC CONTENT

100% polyester Air Mesh with moisture management

SIZING & PRICES

KH109	ADULT	S-XXL	\$15.00
KH109G	GOALIE	XXXL	\$18.00
KH109Y	YOUTH (dual sizes)	S/M, L/XL	\$14.00





STOCK GAME SOCKS

GAME SOCKS ADULT, INTERMEDIATE & YOUTH STOCK SOCKS KS01A / KS01I / KS01Y - SOLID KS02A / KS02I / KS02Y - STRIPES

DESCRIPTION

- Elasticized ankle to secure shin guard
- Velcro fasteners on inside of sock to attach to pant
- Insert at back for comfortable fit
- Embroidered Warrior wordmark above stripes or at mid-shin (solids)
- Adult: 29" Length x 7" Width
- Intermediate: 25" Length x 6" Width
- Youth: 21" Length x 5.5" Width

LENGTH measured from TOP OF SOCK to BOTTOM OPENING

WIDTH measured across BOTTOM OPENING

- KS01A/KS01I/KS01Y: Solid Socks
- KS02A/KS02I/KS02Y: Striped socks - top/bottom stripe 2" wide, middle stripe 1" wide, 1" space between stripes

FABRIC CONTENT

100% Cationic polyester pebble mesh body with moisture management fibers
100% Cationic polyester double knit stripes

SIZING & PRICES

SOLIDS:	KS01A	ADULT	\$24.00
	KS01I	INTERMEDIATE	\$23.00
	KS01Y	YOUTH	\$22.00
STRIPES:	KS02A	ADULT	\$28.00
	KS02I	INTERMEDIATE	\$27.00
	KS02Y	YOUTH	\$26.00



BLACK/
WHITE



DK. GREEN/
WHITE



MAROON/
WHITE

NEW!
FOR 2015



BLACK



NAVY



ROYAL



SCARLET



WHITE



NAVY/
WHITE



ROYAL/
WHITE



SCARLET/
WHITE



ADULT & YOUTH STOCK SHORTS TRAINING

"COLLEGIATE-CUT" PRACTICE SHORT

K669 / K667Y

DESCRIPTION

- Double thickness short with moisture management liner
- 1 1/2" self-material covered elastic waistband with inside drawcord
- V-notches on sides
- 9" inseam for Men's and 7" inseam for Youth

FABRIC CONTENT

100% eXtreme mesh Cationic colorfast polyester 70 denier tricot mesh with moisture management treatment

SIZING & PRICES

K669	ADULT	S-XL	\$14.50	XXL	\$16.50
K667Y	YOUTH	S-XL	\$13.50		



BLACK COL. BLUE DK. GREEN MAROON NAVY



ORANGE PURPLE ROYAL SCARLET WHITE



PRACTICE / TRAINING SHORT WITH POCKETS

K699LP

DESCRIPTION

- Single ply short with two on-seam, self-material "deep" pockets
- 2" extra comfortable covered elastic waistband, inside drawcord
- 9" inseam

FABRIC CONTENT

90% eXtreme microknit Cationic colorfast polyester / 10% spandex with moisture management fibers

SIZING & PRICES

K699LP	ADULT	S-XL	\$30.00	XXL	\$32.00
		XXXL	\$34.00	XXXXL	\$36.00



BLACK COL. BLUE DK. GREEN MAROON NAVY



ORANGE PURPLE ROYAL SCARLET SILVER

NEW!
COLORS
FOR 2015!



BLACK/WHITE



CHARCOAL/WHITE



DK. GREEN/WHITE



MAROON/WHITE



NAVY/WHITE



PURPLE/WHITE



ROYAL/WHITE



SCARLET/WHITE

WATER REPELLANT JACKET IGNITION



NEW!
FOR 2015



IGNITION ADULT & YOUTH WATER REPELLANT JACKET K902J / K902JY

DESCRIPTION

- FULL ZIP JACKET**
Full zip jacket with self-material kissing welts over zipper
- CONTRAST COLOR INSERTS**
Contrast color, self-material sleeve inserts start mid sleeve and curve into inner arm
Contrast color, self-material front inserts start at waist and curve into top of side pockets
- BACK VENTING**
Back vent for breathability and ease of decoration (velcro closure on back)
- UNISEX FIT**
- ADJUSTABLE SLEEVE PULL TABS**
Adjustable velcro sleeve pull tabs at sleeve ends with inside cuff with thumbhole for better fit and protection against the weather
- FRONT ZIPPERED SIDE POCKETS**
Two front welt pockets with zipper closure
- WARRIOR LOGOS**
Embroidered Warrior circle "W" logo on upper right arm (as worn)
Embroidered Warrior wordmark logo on left side pocket, and bottom back right (as worn)
- WARRIOR BRANDED PULL TAB ON ZIPPER**
Warrior pull tab on front zipper
- SELF-MATERIAL STAND-UP COLLAR**
Main body color self-material 3" stand-up collar
- CELL PHONE POCKET & PEN HOLDER**
Inside cell phone pocket and pen holder

FABRIC CONTENT

100% polyester with special breathable water repellant coating
100% polyester lightweight taffeta liner

SIZE & PRICE

K902J & K902JY STOCK JACKET:

K902J - Adult	S-XL	\$95.00
K902J - Adult	XXL	\$99.00
K902J - Adult	XXXL	\$103.00
K902JY - Youth	S-XL	\$93.00

STOCK COLORS



WATER REPELLANT JACKET & PANT
STORM



STORM WATER REPELLANT JACKET AND PANT
K900 / K900Y / K901P / K901PY

DESCRIPTION

JACKET FEATURES:

- 1 WATER REPELLANT**
Water repellant jacket with moisture wicking mesh inside liner
- 2 PIPING**
Contrast color white piping from neck to sleeve ends and completely across both front and back vents
- 3 WATER REPELLANT ZIPPER**
Full zip front with kissing welts over zipper for water resistance and appearance
- 4 WEATHER FLAP**
Inside weather flap behind zipper with Warrior branded taping
- 5 FLEECE NECK LINER**
Stand-up collar with fleece neck liner for warmth and comfort
- 6 INTERNAL ELASTICIZED SLEEVES**
Straight hemmed sleeves with internal elasticized cuffs
- 7 BOTTOM HEM CLINCH**
Open hemmed bottom with adjustable elastic drawcord
- 8 FRONT POCKETS & KEY HOLDER**
Two front welted pockets with carabiner key holder on sewn-in elastic cord (inside right pocket)
- 9 FRONT & BACK VENTING**
Open vent panels on both front and back of jacket for breathability and access for decorations with hidden self-material rear shoulder gussets for better range of motion
- 10 MP3 PLAYER POCKET & PORT**
PVC mp3 player cord port with buttonhole on neck and inside chest pocket to secure device while in motion
- 11 CELL PHONE POCKET & PEN HOLDER**
Inside cell phone pocket and pen holder

FABRIC CONTENT

- 100% polyester microfiber with special breathable water repellant coating
- 100% polyester moisture wicking mesh liner (Black only)

SIZE & PRICE

K900 STOCK JACKET:

K900	- Adult	XS-XL	\$95.00
K900	- Adult	XXL	\$99.00
K900	- Adult	XXXL	\$103.00
K900Y	- Youth	S-L	\$93.00

K901P STOCK PANT:

K901P	- Adult	XS-XL	\$64.00
K901P	- Adult	XXL	\$67.00
K901P	- Adult	XXXL	\$70.00
K901PY	- Youth	S-L	\$62.00

All colors available in ADULT SIZES. YOUTH SIZES only available in BLACK, NAVY, ROYAL and SCARLET.



SOFT SHELL JACKET
STRATUS



STRATUS SOFT SHELL JACKET
K993J / K993JY

DESCRIPTION

- 1 SOFT, FLEXIBLE AND BREATHABLE**
Stretch woven soft shell fabric - super soft, flexible and highly breathable (inside is micro fleece)
- 2 FULL FRONT ZIPPER WITH WARRIOR PULL TAB**
Full front zipper jacket with Warrior pull tab
- 3 ZIPPERED EXTERIOR CHEST POCKET**
One chest pocket for storage
- 4 WATER REPELLANT ZIPPERS**
Kissing welts over front and chest zippers for appearance and to secure water repellant features
- 5 FRONT ZIPPERED POCKETS**
Two front pockets with hidden zippers with button hole on right inside pocket for headphone cord access
- 6 REFLECTIVE PIPING**
Reflective piping for night wear on sides of jacket on mid body and under front pockets
- 7 INTERNAL ELASTICIZED SLEEVES**
Internal elasticized sleeve end inside cuffs for better fit and protection against the weather
- 8 ADJUSTABLE SLEEVE TAB PULLS**
Adjustable self-material sleeve tab pulls with embroidered platinum circle "W" on left tab
- 9 COVER SEAMED FOR DURABILITY**
Entire jacket is cover seamed for durability and appearance
- 10 ATHLETIC CUT SILHOUETTE**
Athletic cut silhouette with set-in sleeves
- 11 STAND-UP COLLAR**
Main body color, self-material stand-up collar
- 12 STRAIGHT HEMMED BOTTOM**
Straight hemmed cut on bottom of jacket
- 13 WARRIOR LOGO ON BACK**
Embroidered platinum WARRIOR logo on back right shoulder as worn

FABRIC CONTENT

- 100% water repellant polyester two-way stretch knit soft shell with micro fleece bonding

SIZE & PRICE

K993J STOCK JACKET:

K993J	- Adult	XS-XL	\$100.00
K993J	- Adult	XXL	\$104.00
K993J	- Adult	XXXL	\$108.00
K993JY	- Youth	M-XL	\$96.00

STOCK COLORS





WARM-UP JACKET
MOTION

PAIR THIS JACKET WITH THE
“VISION” PANT
FOR A COMPLETE SET.
SEE THE “VISION” PANT
K981P / K981PY ON [PAGE 36](#)



MOTION WARM-UP JACKET

K983J / K983JY

DESCRIPTION

- 1 FULL ZIP JACKET**
Full zip jacket with self-material kissing welts over zipper
- 2 CONTRAST COLOR INSERTS**
Contrast color, self-material front inserts start at collar and curve down towards arm openings
- 3 FRONT AND BACK VENTING**
Front and back vents for breathability and ease of decoration (velcro closure on back)
- 4 SCOOP BOTTOM WITH ELASTIC DRAWCORD**
Hemmed scoop bottom with adjustable elastic drawcord
- 5 INTERNAL ELASTICIZED SLEEVES**
Open hemmed sleeve ends with inside cuff for better fit and protection against the weather
- 6 FRONT ZIPPERED POCKETS**
Two front welt pockets with zipper closure
- 7 ZIPPERED INSIDE POCKET & MP3 PORT**
Inside zippered pocket with MP3 cord port for headphone cord access
- 8 INSERT ABOVE BACK VENT FOR INNOVATIVE DECORATION LOCATION**
Contrast color, self-material insert above back vent across the back for innovative decoration location (1" wordmark only)
- 9 “LACROSSE HEAD” INSERT ON BACK FOR INNOVATIVE DECORATION LOCATION**
Main body color, self-material Lacrosse head insert on upper back (great for optional 3" x 3" decoration location)
- 10 WARRIOR LOGOS**
Tone on tone raised circle “W” logo on back left shoulder as worn and full WARRIOR logo on lower front right as worn
- 11 WARRIOR BRANDED PULL TAB IN ZIPPER**
Warrior pull tab on front zipper
- 12 SELF-MATERIAL STAND-UP COLLAR**
Main body color self-material stand-up collar
- 13 PAIR WITH “VISION” PANT**
Designed to be worn with the K981P/K981PY pant

FABRIC CONTENT

100% polyester taffeta body
100% polyester lightweight taffeta liner

SIZE & PRICE

K983J & K983JY STOCK JACKET:
K983J - Adult S-XL **\$65.00**
K983J - Adult XXL **\$68.00**
K983J - Adult XXXL **\$71.00**
K983JY - Youth S-XL **\$62.00**

STOCK COLORS



WARM-UP JACKET AND PANT
VISION



VISION WARM-UP JACKET AND PANT

K980J / K980JY / K981P / K981PY

DESCRIPTION

JACKET FEATURES:

- 1 FULL ZIP JACKET**
Full zip jacket with self-material kissing welts over zipper
- 2 PIPING**
Two rows of white piping from underarm up to the front and back of collar and single row down the sides
- 3 TECH FABRIC INSERTS**
Tech fabric charcoal inserts on front and back of underarm
- 4 FRONT AND BACK VENTING**
Front and back vents for breathability and ease of decoration (velcro closure on back)
- 5 SCOOP BOTTOM**
Hemmed scoop bottom
- 6 ADJUSTABLE ELASTIC DRAWCORDS**
Adjustable elastic drawcords on hem for tight fit
- 7 INSIDE POCKET & MP3 PORT**
PVC MP3 player cord port with buttonhole and inside chest pocket
- 8 UNISEX FIT**
- 9 INTERNAL ELASTICIZED SLEEVES**
Open hemmed sleeve ends with inside cuff for better fit and protection against the weather
- 10 FRONT ZIPPERED POCKETS**
Two front welt pockets with zipper closure

FABRIC CONTENT

100% polyester taffeta body
100% polyester lightweight taffeta liner

SIZE & PRICE

K980J & K980JY STOCK JACKET:
K980J - Adult XS-XL **\$65.00**
K980J - Adult XXL **\$68.00**
K980J - Adult XXXL **\$71.00**
K980JY - Youth S-XL **\$62.00**

PANT FEATURES:

- 1 PIPING**
Solid pant with white piping straight down the sides of the pant
- 2 BOTTOM SIDE ZIPPERS**
12" bottom side zippers - zipper starts 4" from bottom to allow for inseam alterations
- 3 BOTTOM SNAP CLOSURE**
Snap closure at bottom for performance fit
- 4 ELASTIC WAISTBAND**
1" covered elastic waistband with inside drawcord
- 5 FRONT AND BACK POCKETS**
Pockets on each side and on back with zipper closure

FABRIC CONTENT

100% polyester taffeta body
100% polyester lightweight taffeta liner

SIZE & PRICE

K980J & K980JY STOCK JACKET:
K980J - Adult XS-XL **\$65.00**
K980J - Adult XXL **\$68.00**
K980J - Adult XXXL **\$71.00**
K980JY - Youth S-XL **\$62.00**

K981P & K981PY STOCK PANT:

K981P - Adult XS-XL **\$51.00**
K981P - Adult XXL **\$54.00**
K981P - Adult XXXL **\$57.00**
K981PY - Youth S-XL **\$48.00**

STOCK COLORS





DECORATION PROGRAMS UNIFORM EMBELLISHMENTS

EMBROIDERY

CUSTOM LETTERING, MASCOTS & TEAM NAMES

Stitch Count	6-11	12-24	25-71	72-288	Digitizing
0-5K	\$8.00	\$6.00	\$4.50	\$4.00	\$90.00
5K-10K	\$10.50	\$8.50	\$7.00	\$6.50	\$120.00
10K-15K	\$13.00	\$11.00	\$9.50	\$9.00	\$150.00
15K-20K	\$15.50	\$13.50	\$12.00	\$11.50	\$180.00
20K-25K	\$18.00	\$16.00	\$14.50	\$14.00	\$180.00

Stitch Count Cost + Digitizing Cost = Embroidery Cost

*Prices are based upon number of stitches per design, not number of colors. Prices are per garment per location.

*All designs require an additional digitizing charge, except:

- 1) Digitized designs supplied on a disk in vector format (or equivalent).
- 2) Digitized design is a re-order of an existing design.
- 3) No digitizing charge for American Flags.

*Orders over 288 pieces call for quote.

STANDARD TEAM NAMES / INDIVIDUAL NAMES (1-COLOR)

1 Line (1" Lettering, Max 15 Letters)	\$8.00
2 Line (1" Lettering, Max 15 Letters/Line)	\$10.00

*Spaces and Periods count as letters.

*No digitizing charge for Standard Team Names / Individual Names in Standard Fonts as name only embroidery.

*If altered or mascot added to font then design becomes Custom – see pricing above.

AMERICAN FLAG

*American Flag available (2¼" x 3½") for \$12.00 (for larger flag, call for quote).

FABRIC SEW-OUTS

Fabric Sew-Outs are available for a \$30.00 fee plus shipping.

The Sew-Out fee is added to the digitizing charge.

Embroidery Guidelines:

*Orders less than 6 pieces will incur a 50% up-charge per piece plus a \$40.00 service fee per order.

*Non-stock designs and lettering styles may require an additional art charge at Alleson Athletic's discretion (call for quote).

STANDARD AND SUBLIMATED TACKLE TWILL

STANDARD TACKLE TWILL

LETTERS & NUMBERS	1-COLOR	1-COLOR W/SATIN STITCH	2-COLORS
2" – Letters Only	\$4.00	\$4.50	\$6.50
3"	\$4.20	\$4.70	\$7.00
4"	\$4.60	\$5.60	\$7.50
5" – Letters Only	\$5.00	\$6.00	\$8.00
6"	\$5.50	\$7.00	\$8.50
8"	\$6.00	\$8.00	\$9.00
10"	\$7.00	\$10.00	\$10.50
12"	\$8.00	\$11.00	\$12.00

SCRIPT NAME

Up to 6 Letters	\$22.00	\$27.00	\$36.00
Extra Letters	\$5.50	\$6.00	\$8.50
Add Tail	\$7.00	\$9.00	\$10.50

CUT OUT LETTERS IN TAIL

ONE COLOR

Up to Nine Letters	\$10.00
Extra Letters*	\$1.00

*Subject to fitting in tail.

NAME PLATES

ONE COLOR

2" & 3" Twill Plates	\$5.00
----------------------	--------

Available standard twill colors include:

BLACK BK	BROWN BR	CARDINAL CA	CHARCOAL CH	COLUMBIA BLUE CB	DARK GREEN DG	METALLIC GOLD GD	KELLY GREEN KE	LIGHT GOLD LG	MAROON MA	METALLIC SCARLET MS	NAVY BLUE NA
ORANGE OR	PINK PI	PURPLE PU	ROYAL BLUE RO	METALLIC ROYAL MR	SCARLET SC	SILVER SI	METALLIC SILVER SM	TEAL TE	VEGAS GOLD VG	WHITE WH	

* All prices shown are at suggested retail price and are per garment per decoration location.

* Extra art charges may apply per order.

* Alleson Athletic reserves the right to change prices throughout the year to reflect changes in costs.

SCREEN PRINTING

STANDARD LOGO AND TEAM NAME PRICING

Colors	3-5	6-11	12-24	25-72	73-143	144-287	288-599	600-999	1000-1499	1500+
1 Color	\$12.00	\$6.00	\$5.00	\$4.50	\$4.00	\$3.50	\$2.50	\$2.00	\$1.80	\$1.70
2 Colors	\$15.00	\$9.00	\$8.00	\$7.50	\$7.00	\$6.00	\$5.00	\$4.00	\$3.50	\$3.00
3 Colors	\$18.00	\$11.00	\$10.00	\$9.50	\$9.00	\$8.00	\$7.00	\$6.00	\$5.00	\$4.50
4 Colors	\$21.00	\$13.00	\$12.00	\$11.50	\$11.00	\$10.00	\$9.00	\$8.00	\$7.00	\$6.50

STANDARD NUMBER PRICING (4", 6", 8", 10" AND 12")

Colors	3-5	6-11	12-47	48-143	144 +
1 Color	\$16.00	\$8.00	\$6.50	\$5.50	\$4.50
2 Colors	\$23.00	\$11.50	\$9.50	\$8.00	\$6.50

Available Screen Print colors include:

BLACK BK	BROWN BR	CARDINAL CA	CHARCOAL CH	COLUMBIA BLUE CB	DARK GREEN DG	KELLY GREEN KE	LIGHT GOLD LG	MAROON MA	NAVY BLUE NA	ORANGE OR	PINK PI
PURPLE PU	ROYAL BLUE RO	SCARLET SC	SILVER SI	TEAL TE	VEGAS GOLD VG	WHITE WH					

Screen Print Guidelines:

Pricing is per print location per garment.

No Screen Charges on any Screen Print order.

*Minimum order of three pieces for new and repeat orders.

*We reserve the right to adjust the size of layout/letters to fit the garment in the most attractive way possible. In certain situations a similar lettering style to the one requested may have to be substituted to accommodate the layout.

*Split front garments are priced using double print charges per color.

*No art charge for stock designs or numbers. Extra art charge may apply for custom design artwork. Complex logos and artwork will be charged an art charge rate of \$120.00/hr.

*Call Customer Service for quotes on orders that exceed above quantities, more than four colors and other special requirements.

SUBLIMATED TACKLE TWILL

Add 25% onto Standard Twill Pricing for SUBLIMATED Tackle Twill.

- SUBLIMATED Tackle Twill is offered in one or two colors and with satin stitch only on one color twill. Base Layer offered in solid color or choose from several pattern designs.
- 1st color in SUBLIMATED twill - Base Layer/Fill, see available SUBLIMATED colors below. Offered in solid colors or pattern designs. See page 48 for available pattern designs. Satin stitch is only available in standard tackle twill colors listed to the left.
- The 2nd color in 2-color SUBLIMATED twill - Top Layer/Outline color is solid, standard twill. See available standard twill colors listed to the left.

Available SUBLIMATED twill colors include:

ARMY ORANGE AR	BLACK BK	CARDINAL CA	CHARCOAL CH	COLUMBIA BLUE CB	DARK GREEN DG	GREEN BAY GB	GREY GR	KELLY GREEN KE	LIGHT GOLD LG	MAROON MA	NAVY BLUE NA
OLD GOLD OG	ORANGE OR	PINK PI	PURPLE PU	ROYAL BLUE RO	SCARLET SC	SILVER SI	TEAL TE	TENNESSEE TN	TEXAS ORANGE TO	VEGAS GOLD VG	WHITE WH
USMC RED UR	USMC GOLD UD	USAF ROYAL UT	USAF GREY UG	USN NAVY UN	US ARMY BLACK UB	US ARMY GOLD UG	RIFLE GREEN FG	BAGGY GREEN BY	COMBAT GREY CG	DESERT SAND DS	COYOTE BROWN TS
MILITARY OLIVE MO	INFANTRY BLUE IB	BRASS GOLD BG	BROWN BR	CONCRETE JUNGLE CJ	MOSS GREEN ME	MUD M	OLIVE GREEN OL	SEA GREEN SE	STORM BLUE SB	VINTAGE WHITE VW	WINE RED WR
ELECTRIC AQUA EA	ELECTRIC BLUE EB	ELECTRIC SUBTLE ESD	ELECTRIC GREY EG	ELECTRIC GREEN ED	ELECTRIC MAROON EM	ELECTRIC ORANGE EO	ELECTRIC PINK EP	ELECTRIC PURPLE EP	ELECTRIC WATERMELON EW	ELECTRIC YELLOW EY	CREAMHOLE CM
LAVENDER LA	LIGHT PINK LP	MOON TAIL MT	OCEAN CURRENT OC	POWDER BLUE PB	RAINBOW RED RR	SEA FORTH GREEN SF	SHADOW SH	SOOTY MILK SM	STANDBY RED SR	TANNO YELLOW TY	

Tackle Twill Guidelines:

*Orders less than 6 pieces will incur a 50% up-charge per piece plus a \$40.00 service fee per order.

*Tackle Twill application pricing is per garment, per letter or number digit.

*No art charge for stock designs or numbers. Extra art charge may apply for custom design artwork. Complex logos and artwork will be charged an art charge rate of \$120.00/hr.

*Call Customer Service for quotes on orders that exceed above quantities, more than two colors and other special requirements.

*The shade differences between SUBLIMATED twill colors and garment colors may vary slightly.

*Add 3 weeks for SUBLIMATED Twill on stock or custom garments.

*Custom SUBLIMATED designs are not available.

NUMBER & LETTERING FONTS

Standard Screen Print & Tackle Twill

FULL BLOCK

ABCDEFGHIJKLMNOPQRSTUVWXYZ

0123456789

UNIVERSITY

ABCDEFGHIJKLMNOPQRSTUVWXYZ

0123456789

COLLEGIATE

ABCDEFGHIJKLMNOPQRSTUVWXYZ

0123456789

FALCON

ABCDEFGHIJKLMNOPQRSTUVWXYZ

0123456789

TIFFANY

(NUMBERS ARE TACKLE TWILL ONLY)
ABCDEFGHIJKLMNOPQRSTUVWXYZ

0123456789

DOUBLE OUTLINE

(SCREEN PRINT ONLY)
ABCDEFGHIJKLMNOPQRSTUVWXYZ

0123456789

WARRIOR 1

ABCDEFGHIJKLMNOPQRSTUVWXYZ

0123456789

WARRIOR 2

ABCDEFGHIJKLMNOPQRSTUVWXYZ

0123456789

APACHE

ABCDEFGHIJKLMNOPQRSTUVWXYZ

0123456789

PLAIN BLOCK

ABCDEFGHIJKLMNOPQRSTUVWXYZ

0123456789

OLD ENGLISH

ABCDEFGHIJKLMNOPQRSTUVWXYZ

0123456789

ATHLETIC SCRIPT

ABCDEFGHIJKLMNOPQRSTUVWXYZ

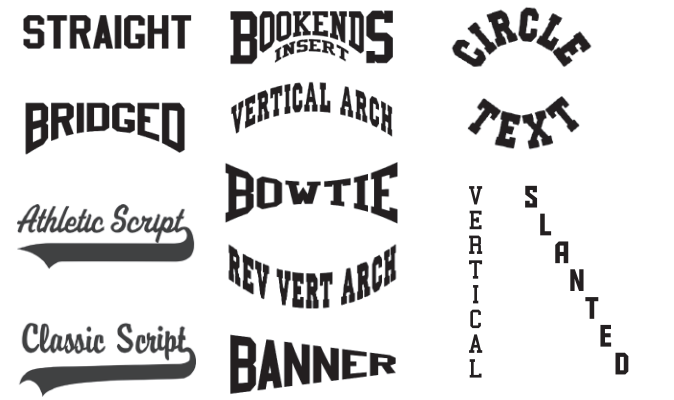
0123456789

CLASSIC SCRIPT

ABCDEFGHIJKLMNOPQRSTUVWXYZ

0123456789

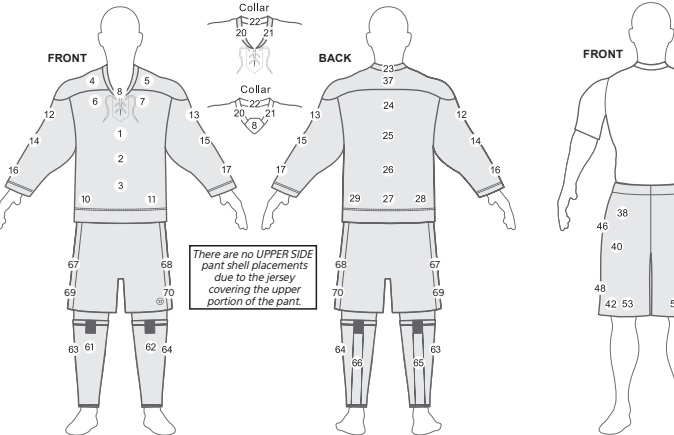
LETTERING ARRANGEMENTS



TOPS

- Upper Front (Standard Team Name Location)
- Center Front (Standard Number Location)
- Lower Front
- Upper Right Chest
- Upper Left Chest
- Right Chest
- Left Chest
- Placket (Where Applicable)
- Below Collar / Neck (Front)
- Bottom Right
- Bottom Left
- Mid Right Sleeve
- Mid Left Sleeve
- Right Elbow Sleeve
- Left Elbow Sleeve
- Lower Right Sleeve
- Lower Left Sleeve
- Right Shoulder
- Left Shoulder
- Right Collar - WS
- Left Collar - WS
- Back Collar Inside - WS
- Back Collar Outside - WS
- Upper Back (Standard Player Name Location)
- Center Back (Standard Number Location)
- Lower Back
- Back Tail
- Bottom Right Back
- Bottom Left Back
- Front Hood
- Back Hood
- Muff Pocket
- Right Outside Hood - WS
- Left Outside Hood - WS
- Inside Hood - WS
- Front Tail
- Below Collar / Neck (Back)

* These locations are also offered Front (A) and Inner (B).



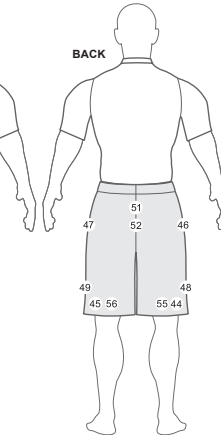
GAME UNIFORM PLACEMENTS

PANT SHELLS

- Mid Right Side - WS
- Mid Left Side - WS
- Lower Right Side - WS
- Lower Left Side - WS
- Upper Right Knee - WS
- Upper Left Knee - WS
- Upper Right Side - WS
- Upper Left Side - WS
- Back Calf Right Insert - WS
- Back Calf Left Insert - WS

SOCKS

- Upper Right Knee - WS
- Upper Left Knee - WS
- Upper Right Side - WS
- Upper Left Side - WS
- Back Calf Right Insert - WS
- Back Calf Left Insert - WS

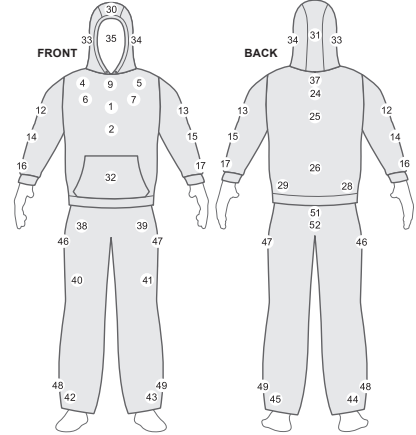


TRAINING SHORTS PLACEMENTS

BOTTOMS

- Right Hip
- Left Hip
- Right Thigh
- Left Thigh
- Lower Right Leg
- Lower Left Leg
- Lower Right Leg Back
- Lower Left Leg Back
- Upper Right Side
- Upper Left Side
- Lower Right Side
- Lower Left Side
- Back Waistband
- Upper Back Waist
- Back Seat
- Lower Right Front Center
- Lower Left Front Center
- Lower Right Back Center
- Lower Left Back Center

WS WARRIOR SUBLIMATION Only
– Depending on style ordered, decoration may NOT be visible due to tuck-in on the following placements – 10, 11, 27, 28, 29 & 36.
– Right or Left refers to the garment as you are wearing it.



OUTERWEAR PLACEMENTS